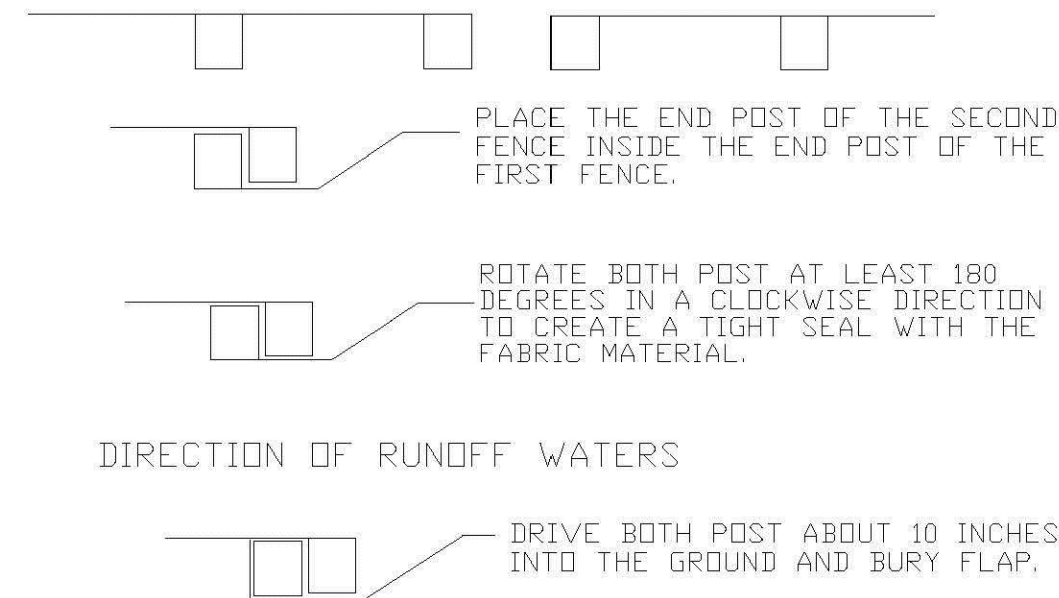


SILT FENCE

EROSION CONTROL GENERAL NOTES

1. SILT FENCE AND RIBIDITY BARRIERS MUST REMAIN IN PLACE AND BE MAINTAINED AT ALL LOCATIONS SHOWN IN THE DRAWINGS UNTIL CONSTRUCTION IS COMPLETED AND SOILS ARE STABILIZED AND VEGETATION HAS BEEN.
2. CONTRACTOR SHALL SUBMIT SCHEDULE FOR THE INSTALLATION, INSPECTION AND MAINTENANCE THE EROSION CONTROLS FEATURES AS SHOWN IN THE DRAWINGS OR AS DIRECTED BY THE DESIGN ENGINEER. THE SCHEDULE SHALL SPECIFICALLY SHALL SPECIFICALLY INDICATE THE SEQUENCE OF CLEARING, EARTH WORK OPERATIONS, WHEN THE EROSION CONTROL FEATURES WILL BE INSTALLED, INSPECTED, AND MAINTAINED. IT SHALL ALSO INCLUDE METHODS TO PREVENT POLLUTION OF STREAM, LAKES, TIDAL WATERS, CANALS, AND IMPDUMENTS, ESTABLISHED.

| | | | |
|----------------------------|------|---|----------------------------|
| ENGINEERING STANDARDS 2022 | | | |
| REVISIONS | | ENGINEERING DIVISION CITY OF POMPAÑO BEACH | SILT FENCE |
| BY | DATE | | |
| | | | DATE: MAY 2022 DWG. NO. |
| | | SCALE: N.T.S. | 509-1 |

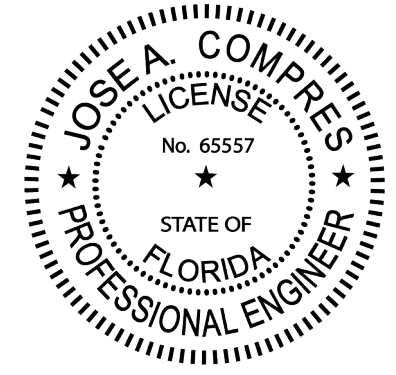


NOTES:

1. INSPECT AND REPAIR FENCE AFTER EACH STORM EVENT AND REMOVE SEDIMENT WHEN NECESSARY.
2. REMOVED SEDIMENT SHALL BE DEPOSITED TO AN AREA THAT WILL NOT CONTRIBUTE SEDIMENT OFF-SITE AND CAN BE PERMANENTLY STABILIZED.
3. SILT FENCE SHALL BE PLACED ON SLOPE CONTOURS TO MAXIMIZE PONDING EFFICIENCY.

ATTACHING TWO SILT FENCES

| | | | |
|----------------------------|------|---|---------------------------|
| ENGINEERING STANDARDS 2022 | | | |
| REVISIONS | | ENGINEERING DIVISION CITY OF POMPAÑO BEACH | ATTACHING TWO SILT FENCES |
| BY | DATE | | |
| | | | |
| | | | |
| | | | |
| SCALE: N.T.S. | | DATE: MAY 2022 DWG. NO. | 509-2 |



THIS ITEM HAS BEEN DIGITALLY SIGNED AND SEALED BY JOSE A. COMPRES
ON THE DATE INDICATED IN THE SIGNATURE. PRINTED COPIES OF THIS
DOCUMENT ARE NOT CONSIDERED SIGNED AND SEALED AND THE
SIGNATURE MUST BE VERIFIED ON ANY ELECTRONIC COPIES.

JOSE A COMPRES, P.E
FLORIDA P.E. LIC. # 65557

CONEMCO ENGINEERING, INC.

AUS MIXED USE / NEW BUILDING - CIVIL P
REDESIGN
324 NW 6TH STREET, POMPAÑO BEACH, FL 33060

CLIENT/OWNER:
AUSTIN FOX ARCHITECTURE

1754 E COMMERCIAL BLVD, FORT LAUDERDALE, FL 33334

| REVISIONS | DATE |
|-----------|------|
| | |
| | |
| | |
| | |

| | |
|--------------|-------------|
| DATE: | 9/12/2025 |
| SCALE: | AS SHOWN |
| DRAWN: | FP |
| CHECKED: | PS |
| APPVD: | JC |
| PROJECT ID: | FPV-C251004 |
| CONTRACT NO: | - |

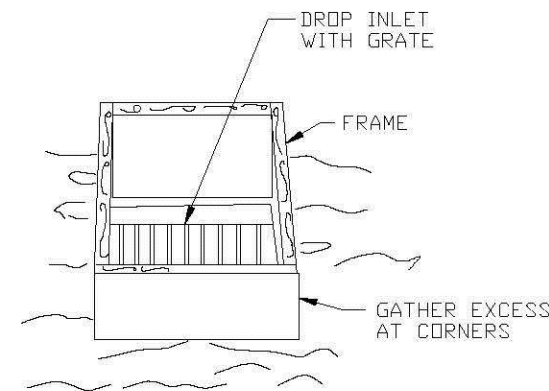
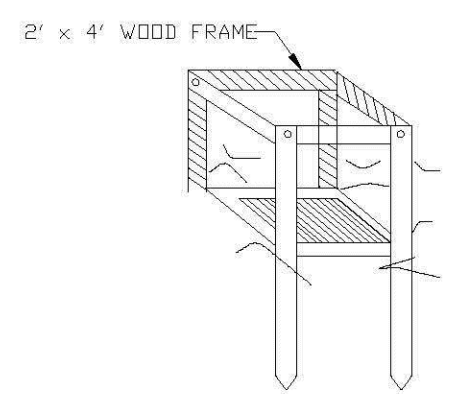
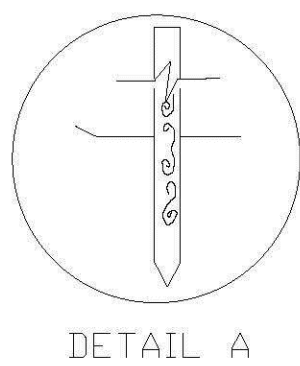
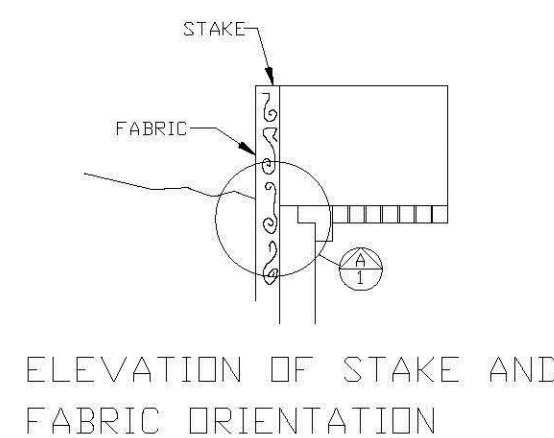
SHEET NAME:

SWPPP DETAILS

DRAWING NO.

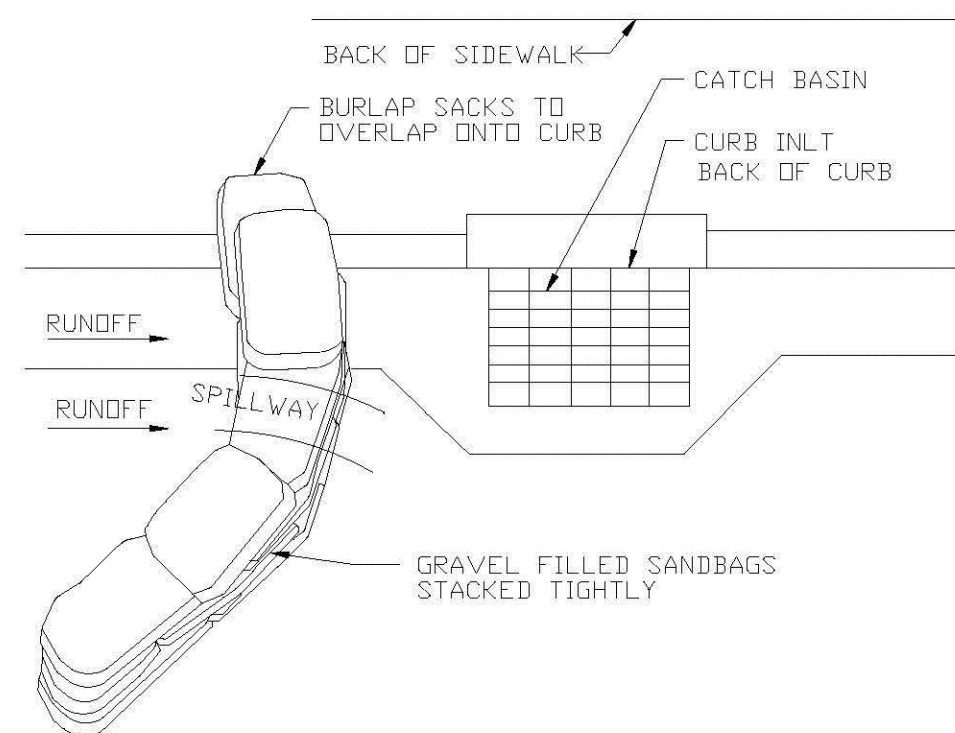
C-502

Sheet No.
12 OF 18



FILTER FABRIC
DROP INLET SEDIMENT FILTER

| | | | |
|---|------|---|--|
| ENGINEERING STANDARDS 2022 | | | |
| REVISIONS | | FILTER FABRIC DROP INLET SEDIMENT FILTER | |
| BY | DATE | | |
| | | | |
| | | | |
| | | | |
| | | | |
| ENGINEERING DIVISION CITY OF POMPANO BEACH | | DATE: MAY 2022 DWG. NO. | |
| SCALE: N.T.S. | | 508-1 | |



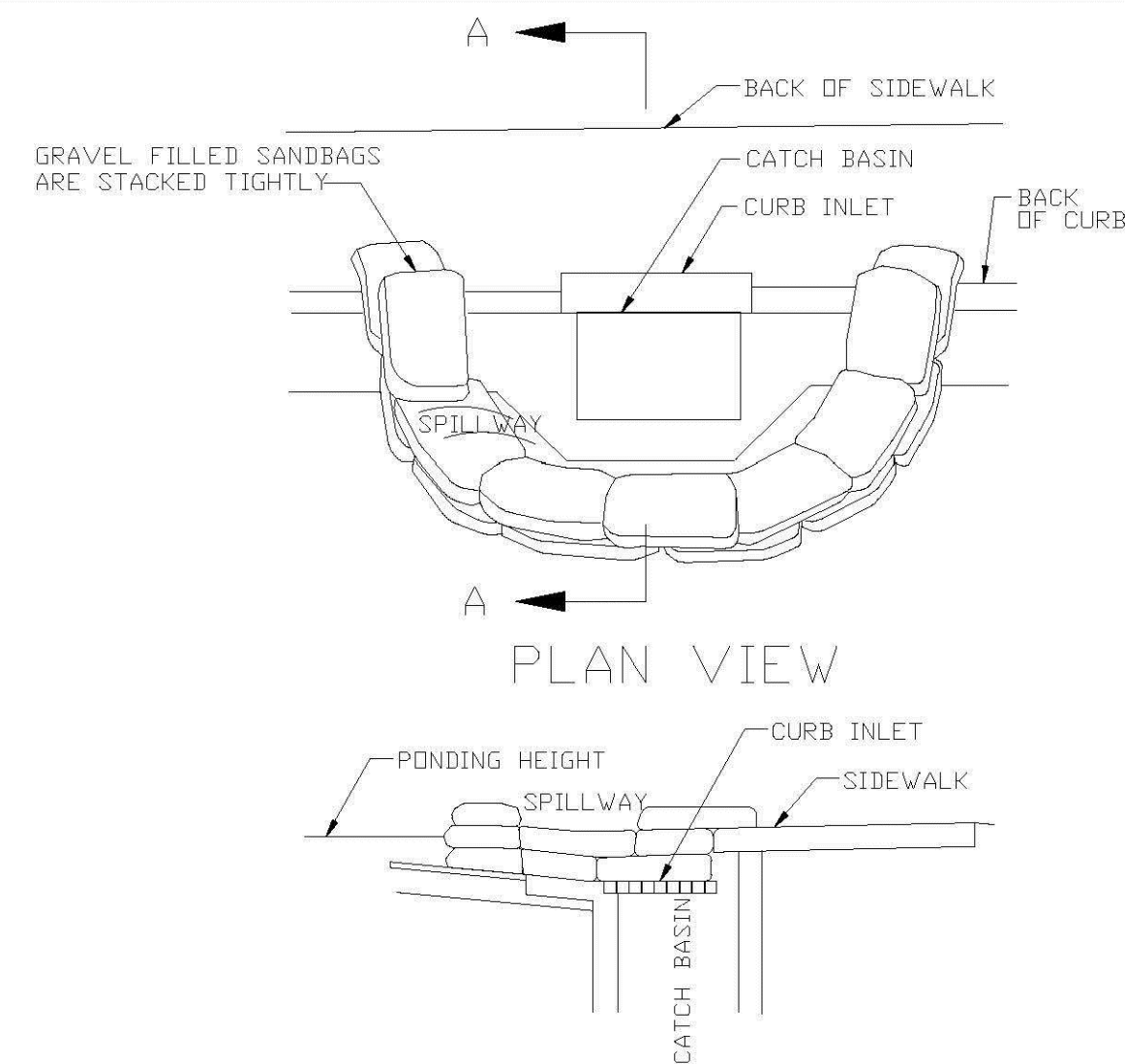
PLAN VIEW

NOTES:

1. PLACE CURB TYPE SEDIMENT BARRIERS ON GENTLY SLOPING STREET SEGMENTS, WHERE
 2. WATER CAN POND AND ALLOW SEDIMENT TO SEPARATE FROM RUNOFF.
SANDBAGS OF EITHER BURLAP OR WOVEN GEOTEXTILE FABRIC ARE FILLED WITH GRAVEL.
3. LAYERED AND PACKED TIGHTLY.
 4. LEAVE A ONE SANDBAG GAP IN THE TOP ROW TO PROVIDE A SPILLWAY FOR OVERFLOW.
- INSPECT BARRIERS AND REMOVE SEDIMENT AFTER EACH STORM EVENT. SEDIMENT AND GRAVEL MUST BE REMOVED FROM THE TRAVELED WAY IMMEDIATELY.

CURB AND GUTTER SEDIMENT BARRIER

| | | | |
|----------------------------|------|---|-------------------------------------|
| ENGINEERING STANDARDS 2022 | | | |
| REVISIONS | | ENGINEERING DIVISION CITY OF POMPANO BEACH | CURB AND GUTTER SEDIMENT BARRIER |
| BY | DATE | | |
| | | | |
| | | | |
| | | | |
| SCALE: N.T.S. | | DATE: MAY 2022 DWG. NO. | 507-2 |



SECTION A-A

NOTES:

1. PLACE CURB TYPEDEMENT BARRIERS ON GENTLY SLOPING STREET SEGEMENTS, WHERE WATER CAN POND AND ALLOW SEDIMENT TO SEPARATE FROM RUNOFF.
2. SANDBAGS, OF EITHER BURLAP OR WOVEN GEOTEXTILE FABRIC, ARE FILLED WITH GRAVEL, LAYERED AND PACKED TIGHTLY.
3. LEAVE ONE SANDBAG GAP IN THE TOP ROW TO PROVIDE A SPILLWAY FOR OVERFLOW.
4. INSPECT BARRIERS AND REMOVED SEDIMENT AFTER EACH STORM EVENT. SEDIMENT AND GRAVEL MUST BE REMOVED FROM THE TRAVELED WAY IMMEDIATELY.

CURB INLET SEDIMENT BARRIER

| | | | |
|----------------------------|------|---|-----------------------------|
| ENGINEERING STANDARDS 2022 | | | |
| REVISIONS | | ENGINEERING DIVISION CITY OF POMPAÑO BEACH | CURB INLET SEDIMENT BARRIER |
| BY | DATE | | |
| | | SCALE: N.T.S. | DATE: MAY 2022 DWG. NO. |
| | | | 507-1 |